



Environment
Agency

➔ **Regulating the Environment**
The Atomic Weapons Establishment

David Griffiths

Team Leader

Defence and Commercial Team

Nuclear Regulation Group

Our priorities and focus

- ➔ Radioactive substances regulation – including discharges to the environment and radioactive waste management/disposal
- ➔ Industrial processes
- ➔ Conventional wastes – water, solids
- ➔ Conventional discharges – water, liquid wastes
- ➔ Construction associated permitting
- ➔ Wider issues – resource usage

My “resources”

- ➔ 2 full time Nuclear Regulators
- ➔ 2 full time Environment Officers
- ➔ Access to the wider expertise of the Environment Agency eg flooding, legal services, waste management expertise
- ➔ Close work with other regulators including HSE, NII and DNSR on common issues

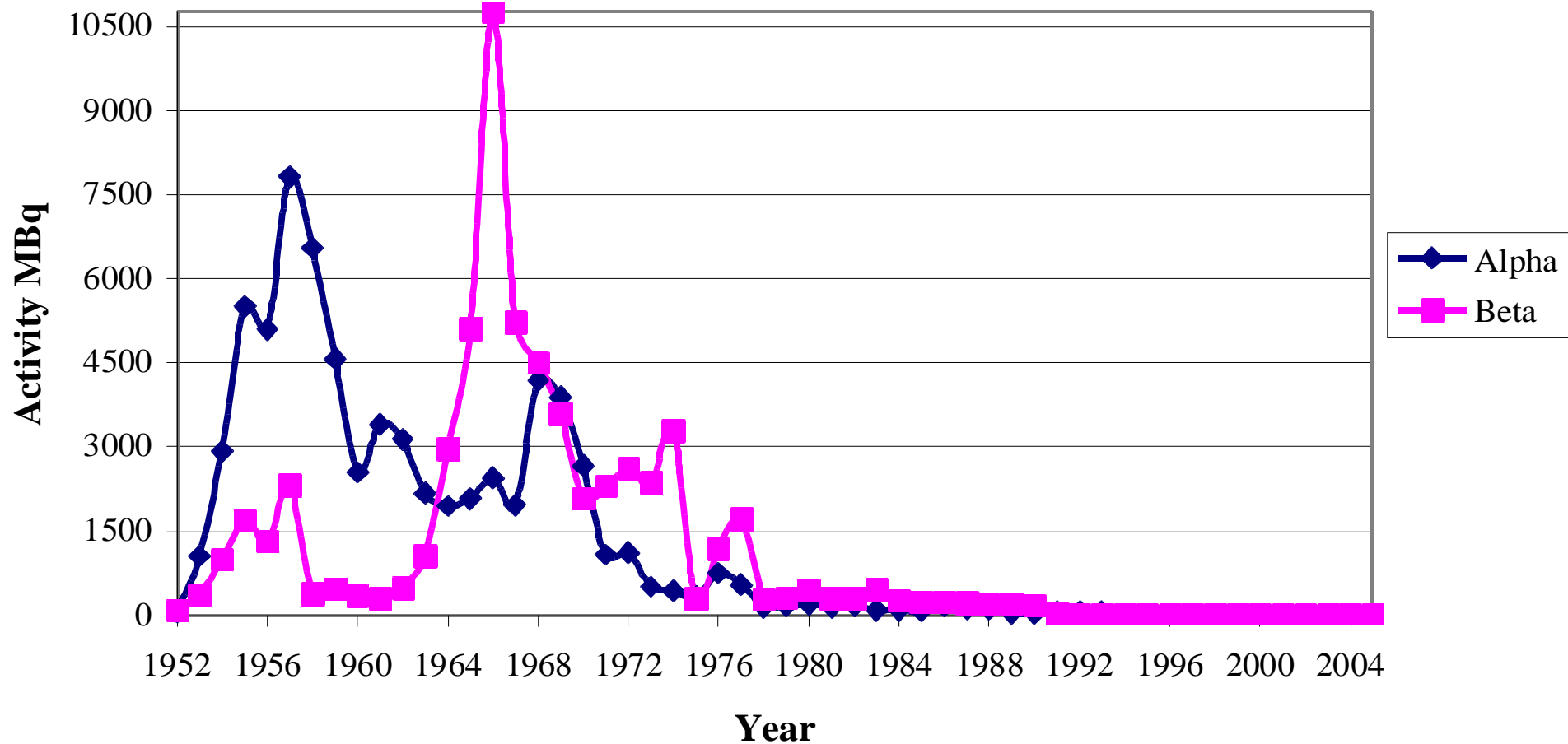
It's not just about discharge limits!

- ➔ Limits – RSA60, RSA93, EPR10
- ➔ How limits are met depends on:
 - ➔ plant and equipment – abatement, filtration
 - ➔ Processes – effluent treatment
 - ➔ Maintenance of all environmentally important plant
 - ➔ Upgrades and replacements
- ➔ **Managing discharges – BPM, BPEO – BAT**

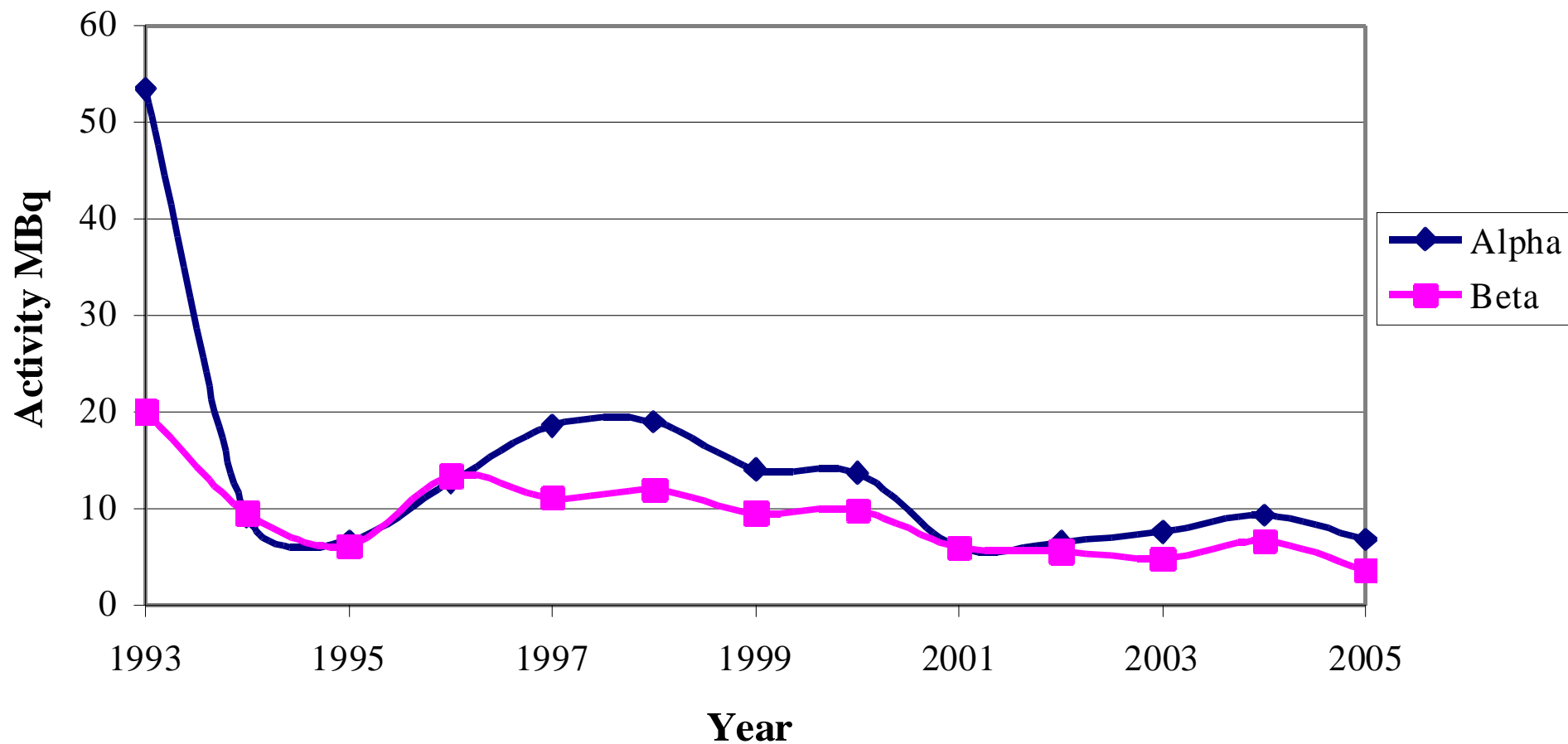
Key environmental discharges

- ➔ Aqueous – Pangbourne Pipeline, “trade wastes”, Aldermaston Stream – north ponds
- ➔ Airborne – stack discharges
 - Alpha
 - Beta/gamma

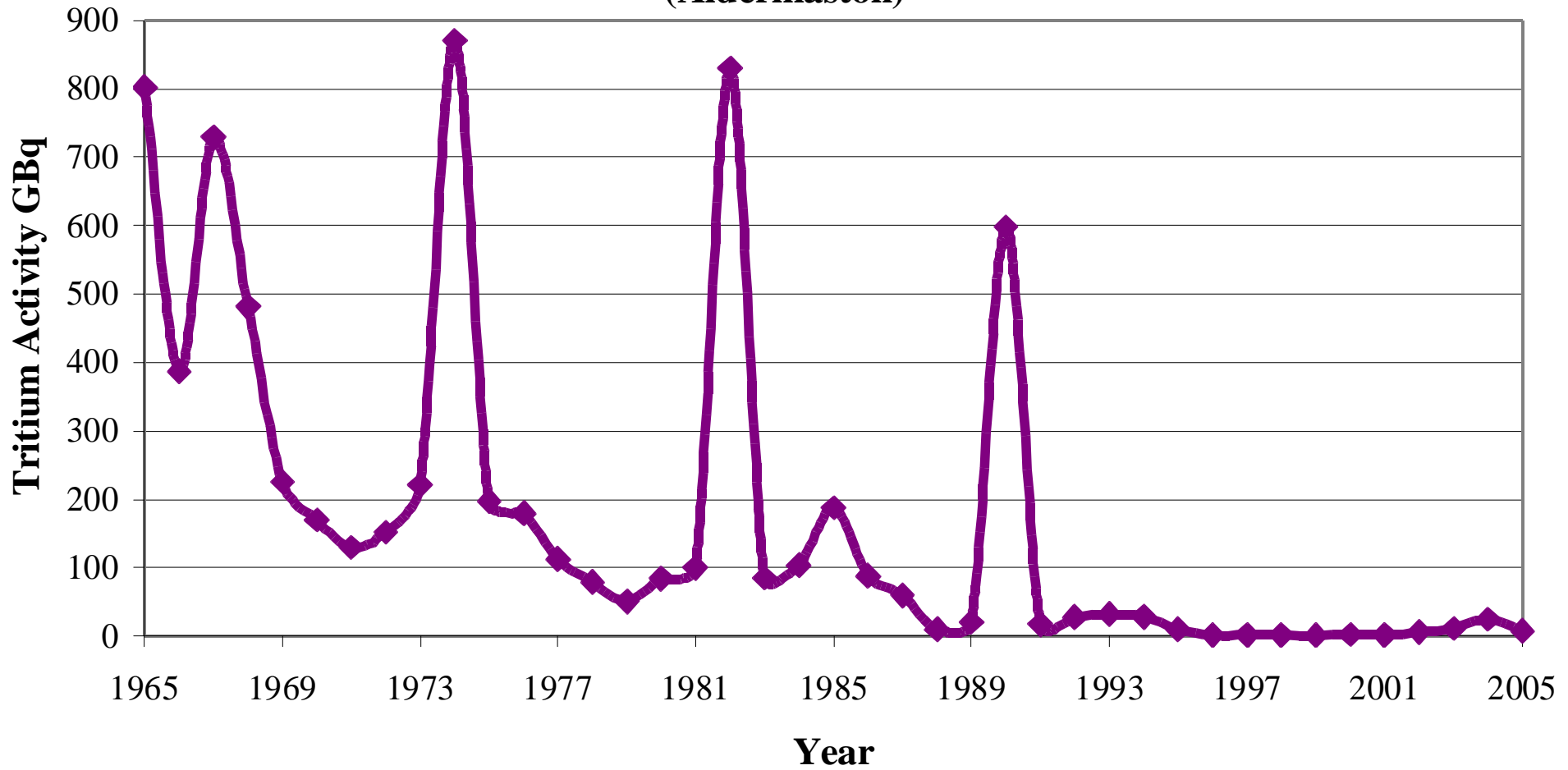
Alpha and Beta Discharges to the Thames via the Pangbourne Pipeline (Aldermaston)



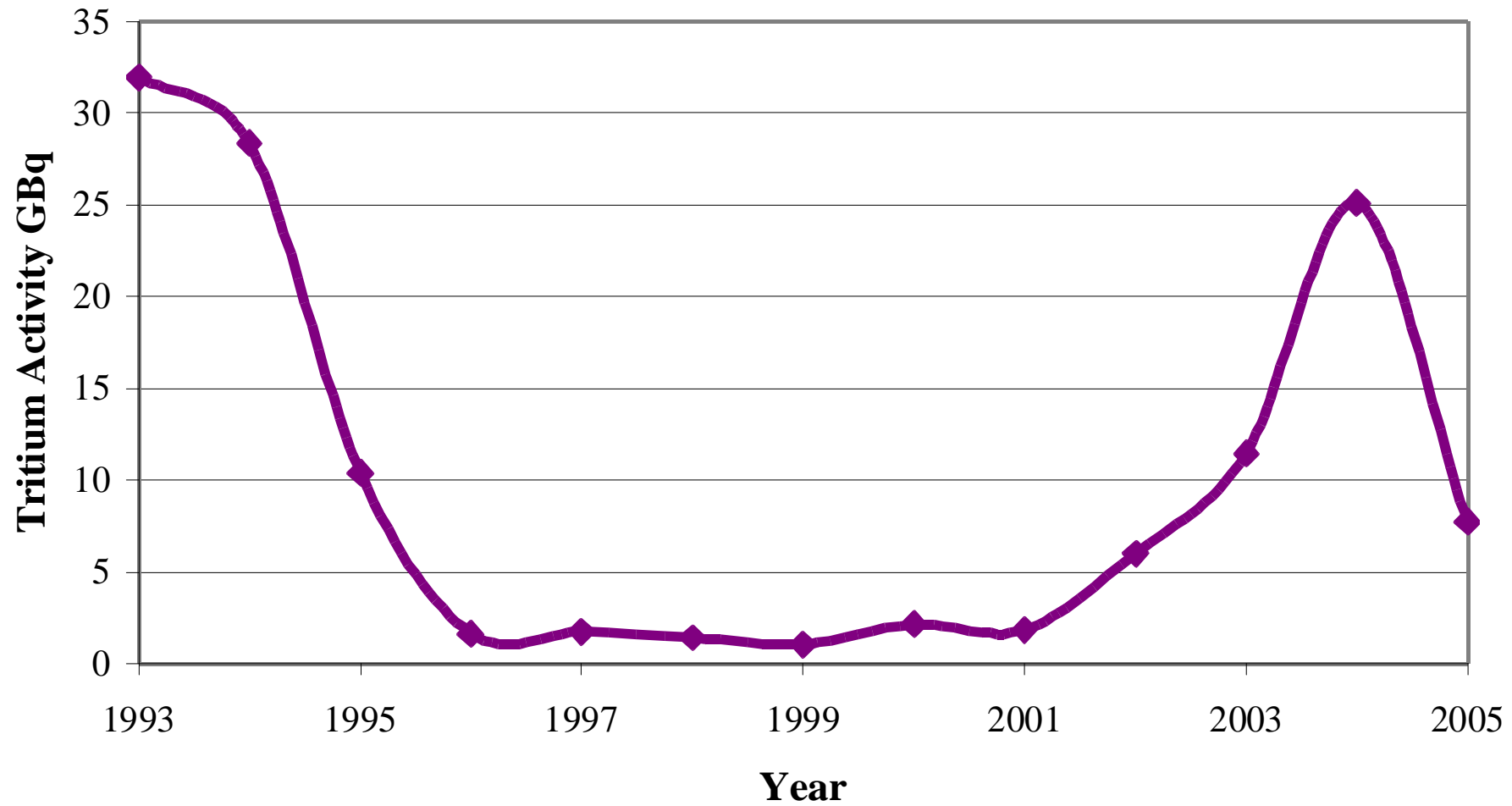
Alpha and Beta Discharges to the Thames via the Pangbourne Pipeline (Aldermaston)



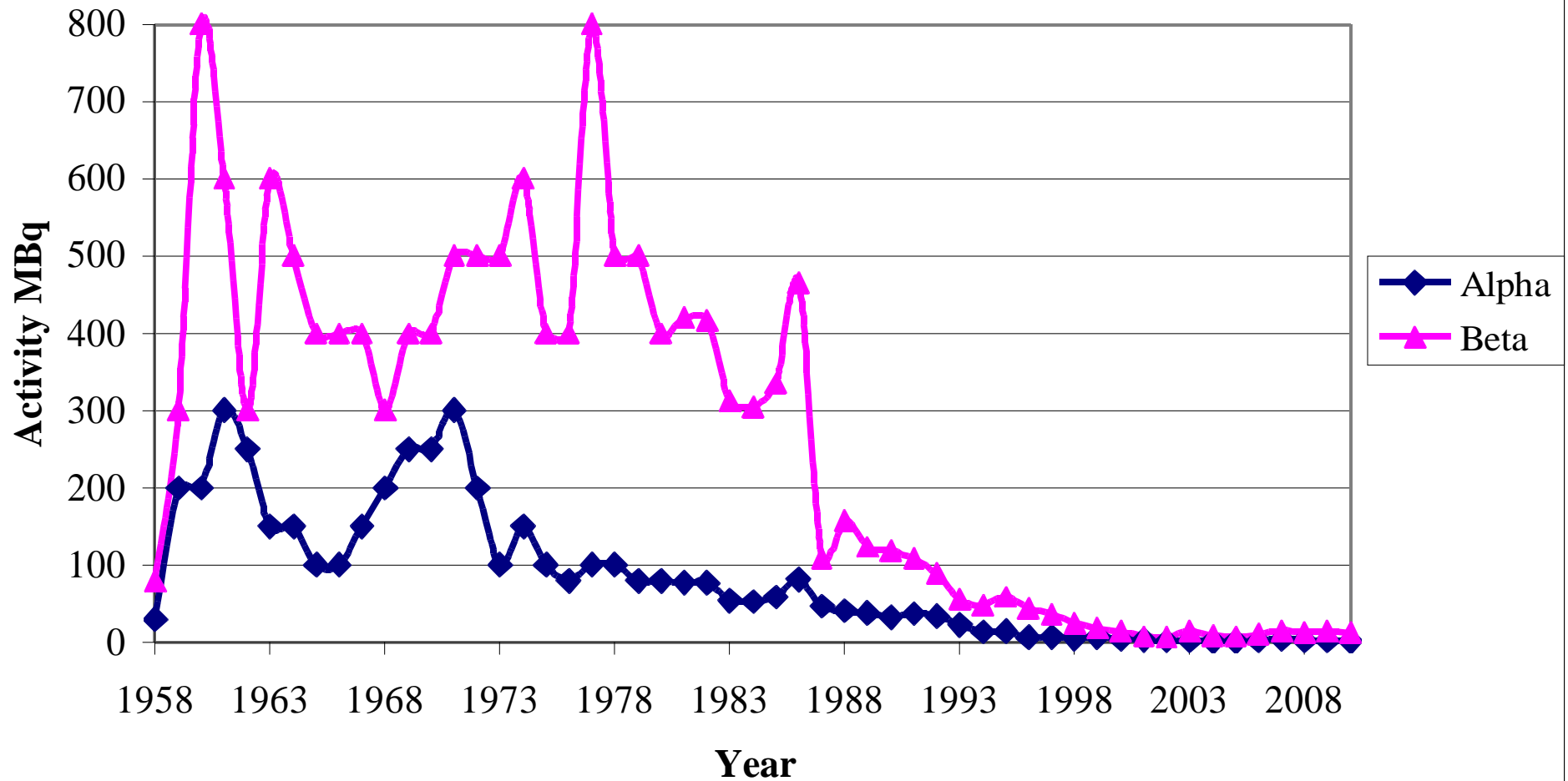
Tritium Discharges to the Thames via the Pangbourne Pipeline (Aldermaston)



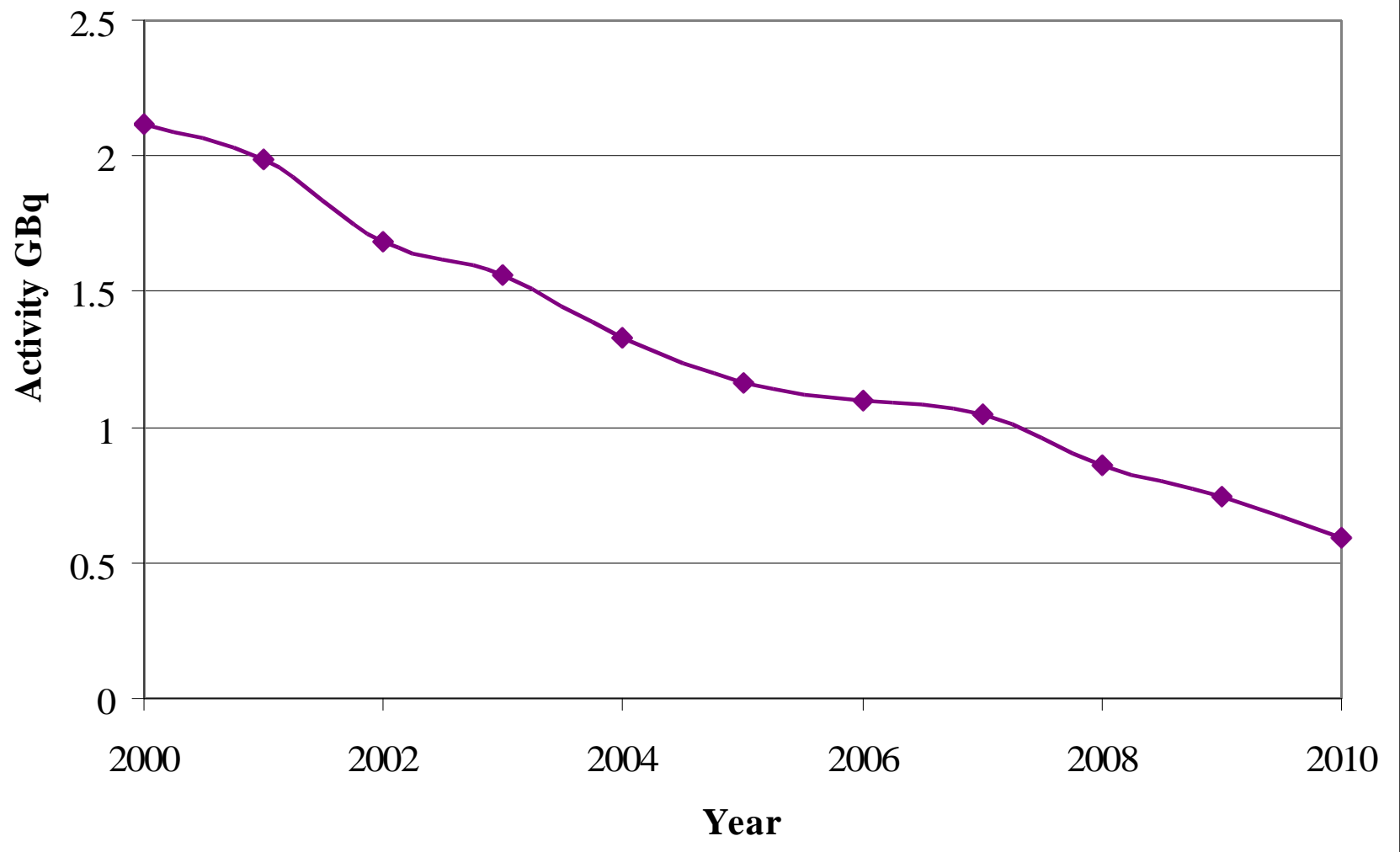
Tritium Discharges to the Thames via the Pangbourne Pipeline (Aldermaston)



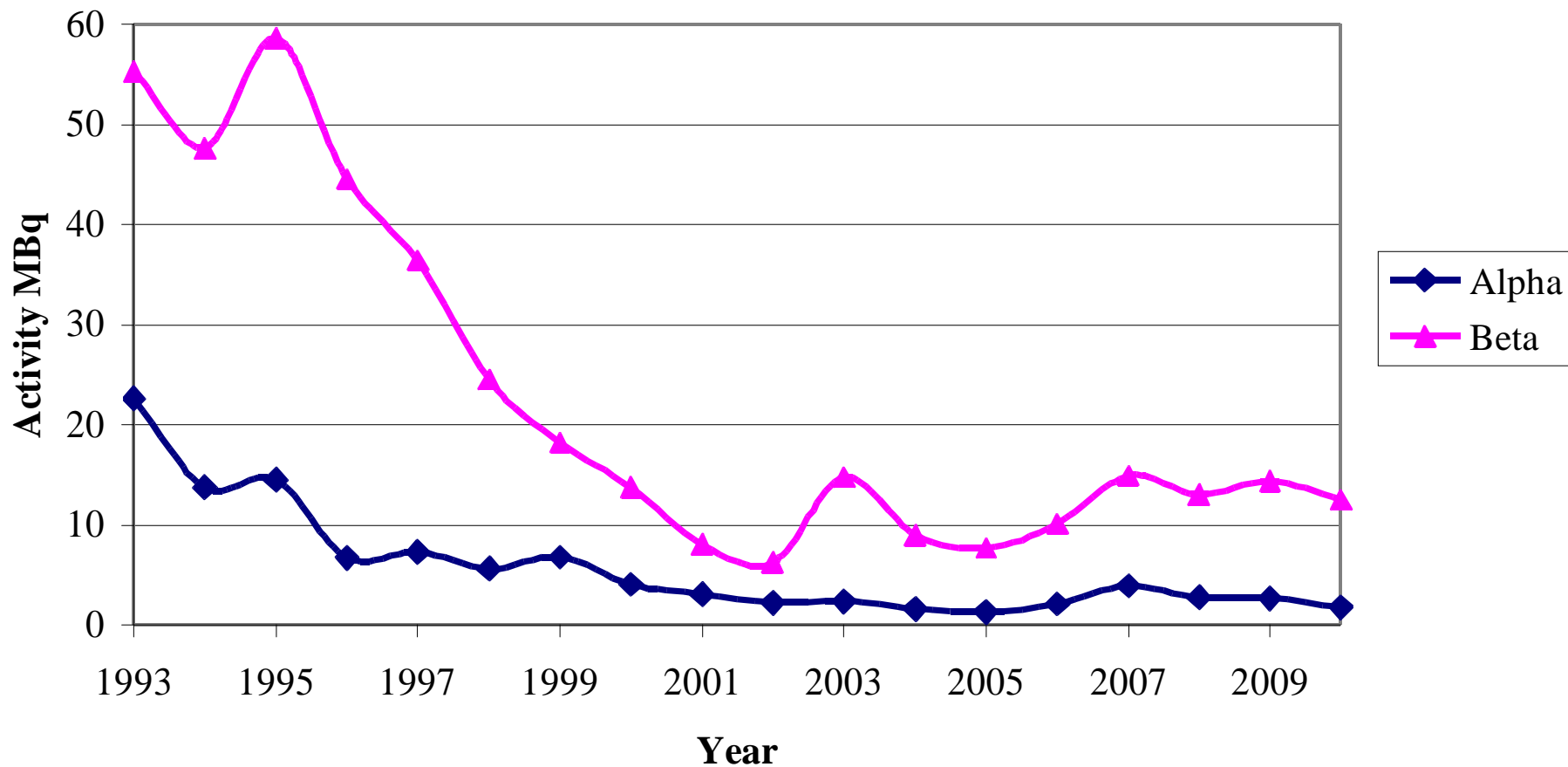
Alpha and Beta Discharges to the Silchester Sewer (Aldermaston)



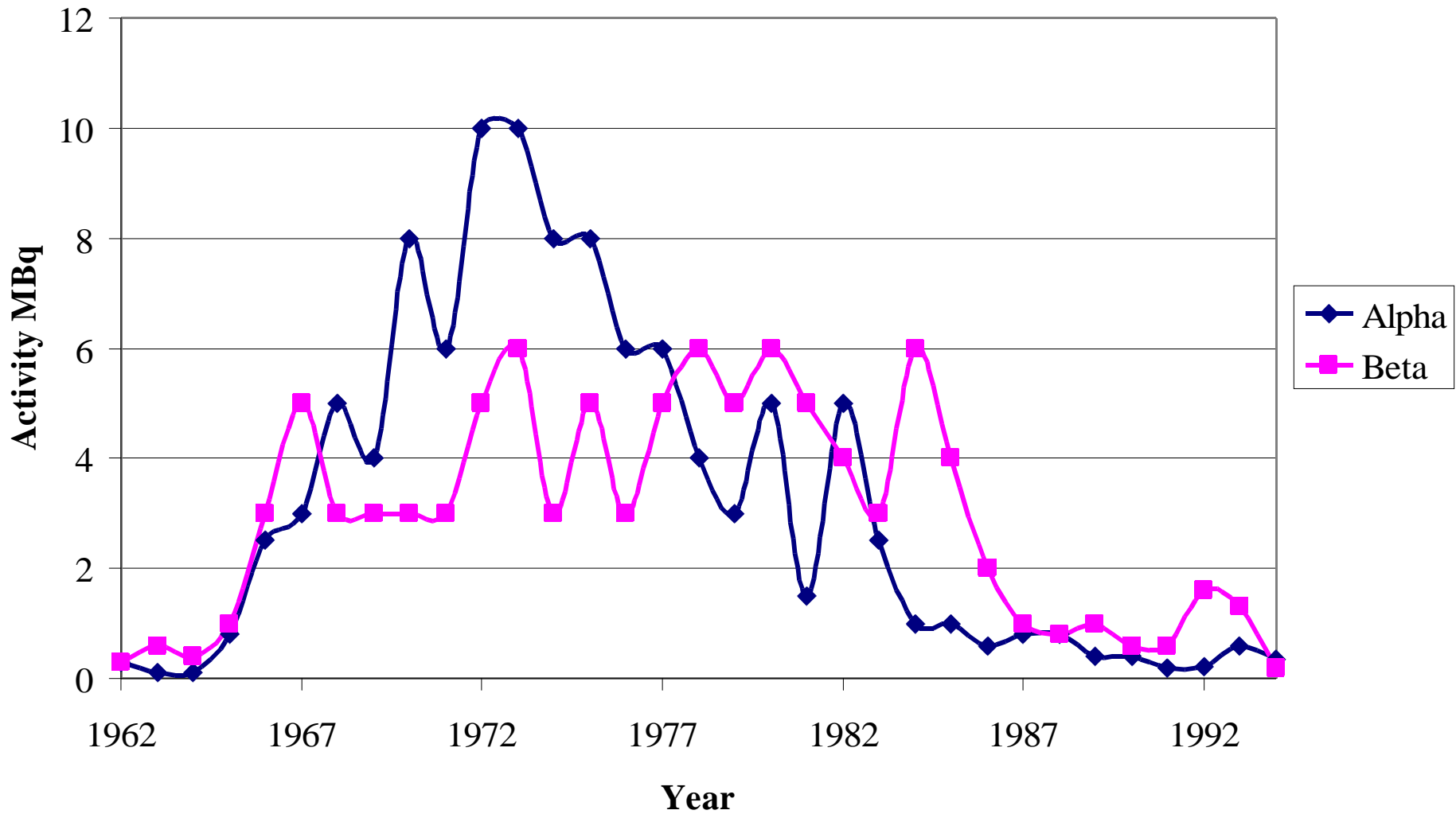
Tritium Discharges to Aldermaston Stream



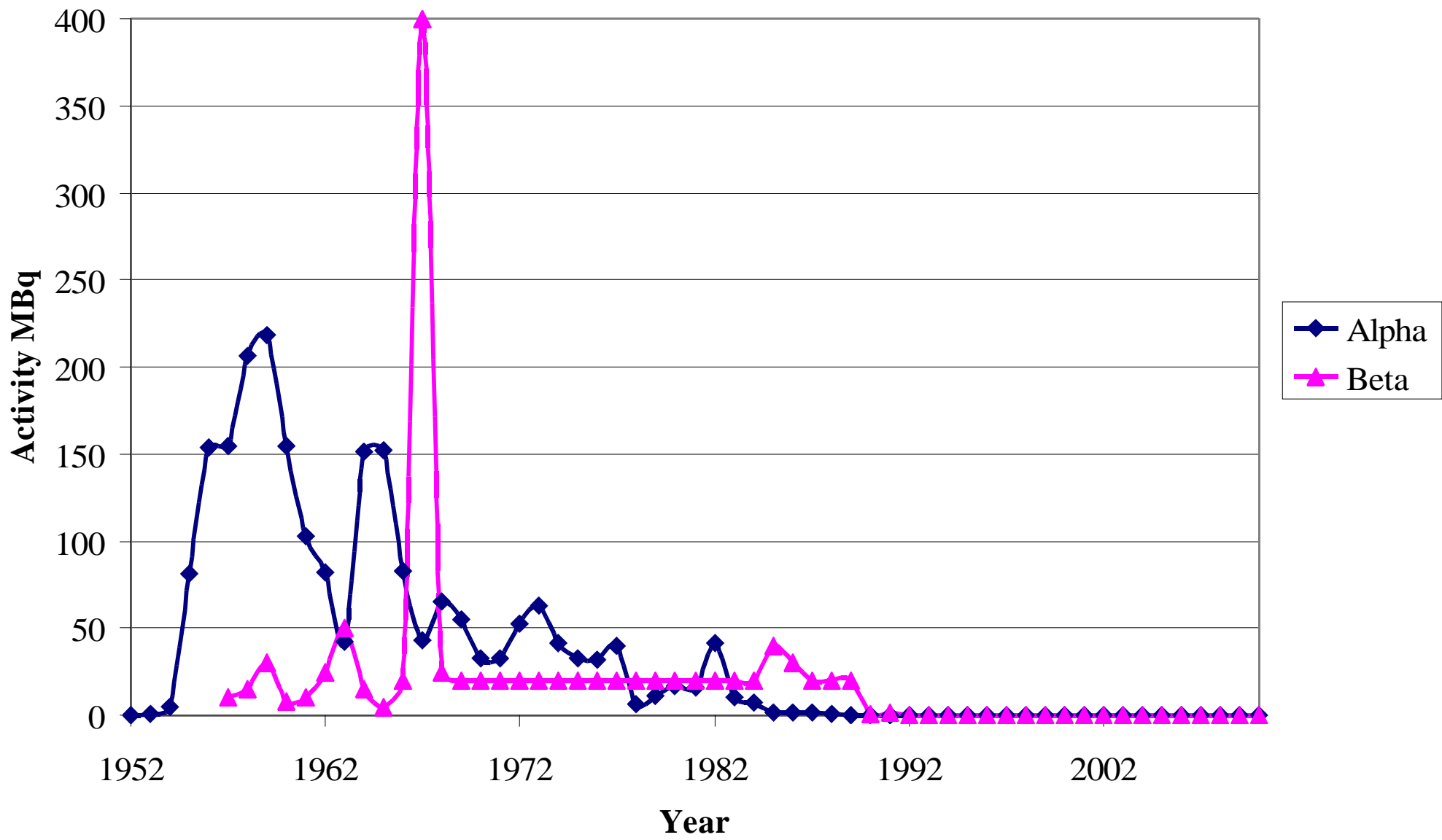
Alpha and Beta Discharges to the Silchester Sewer (Aldermaston)



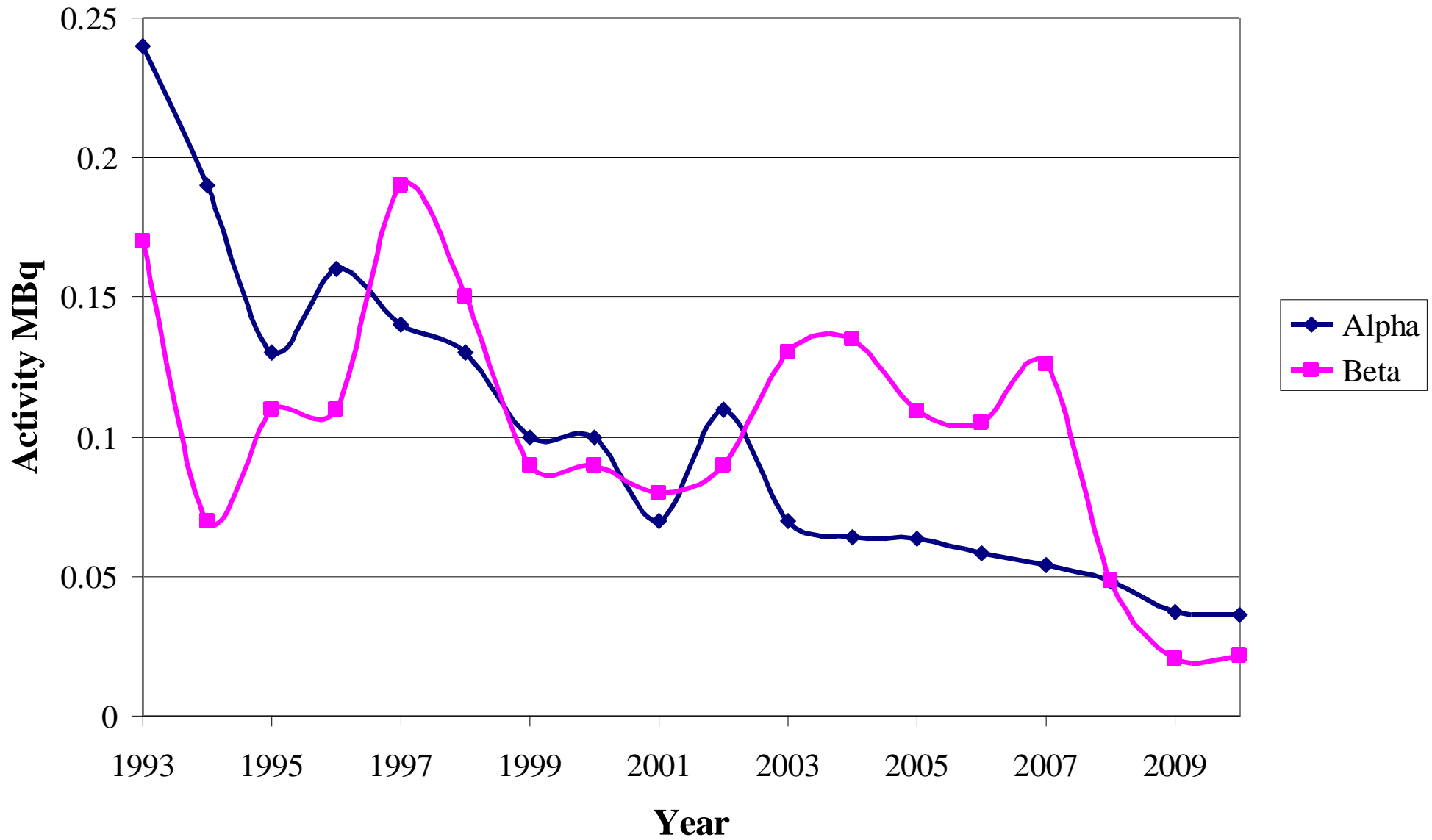
Alpha and Beta Discharges of Treated Trade Waste to Burghfield Brook



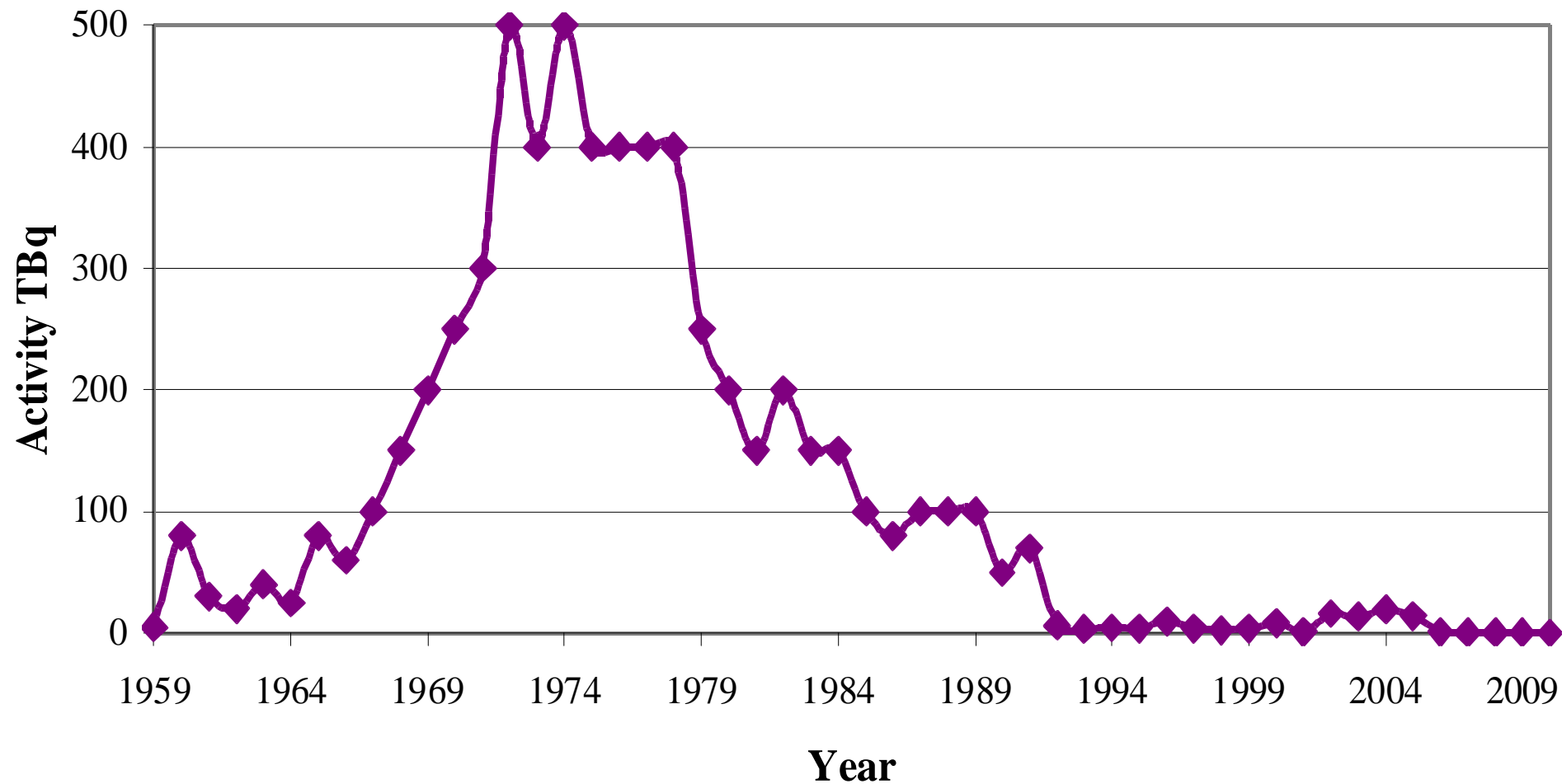
Alpha and Beta discharges to Air (Aldermaston)



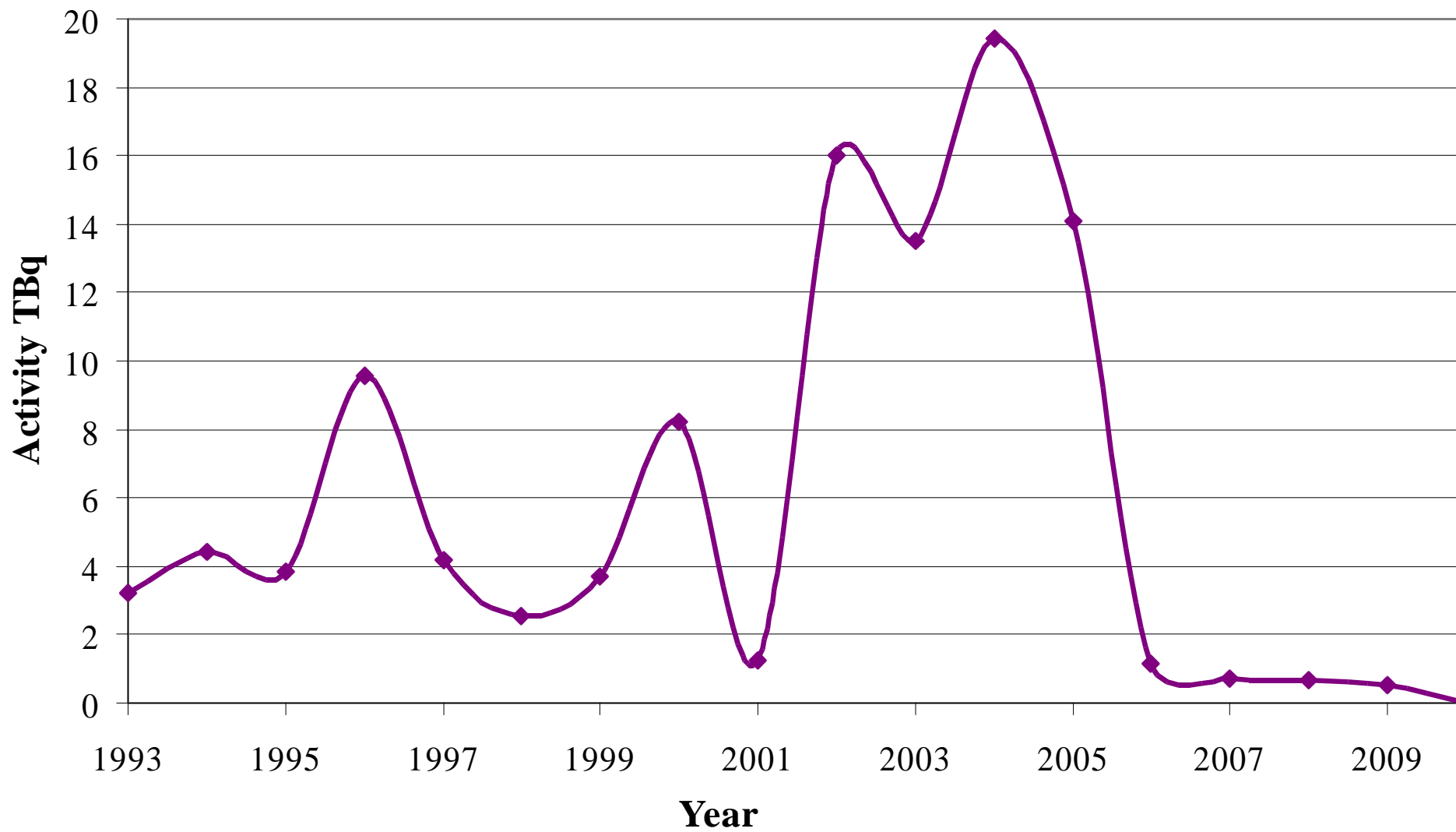
Alpha and Beta discharges to Air (Aldermaston)



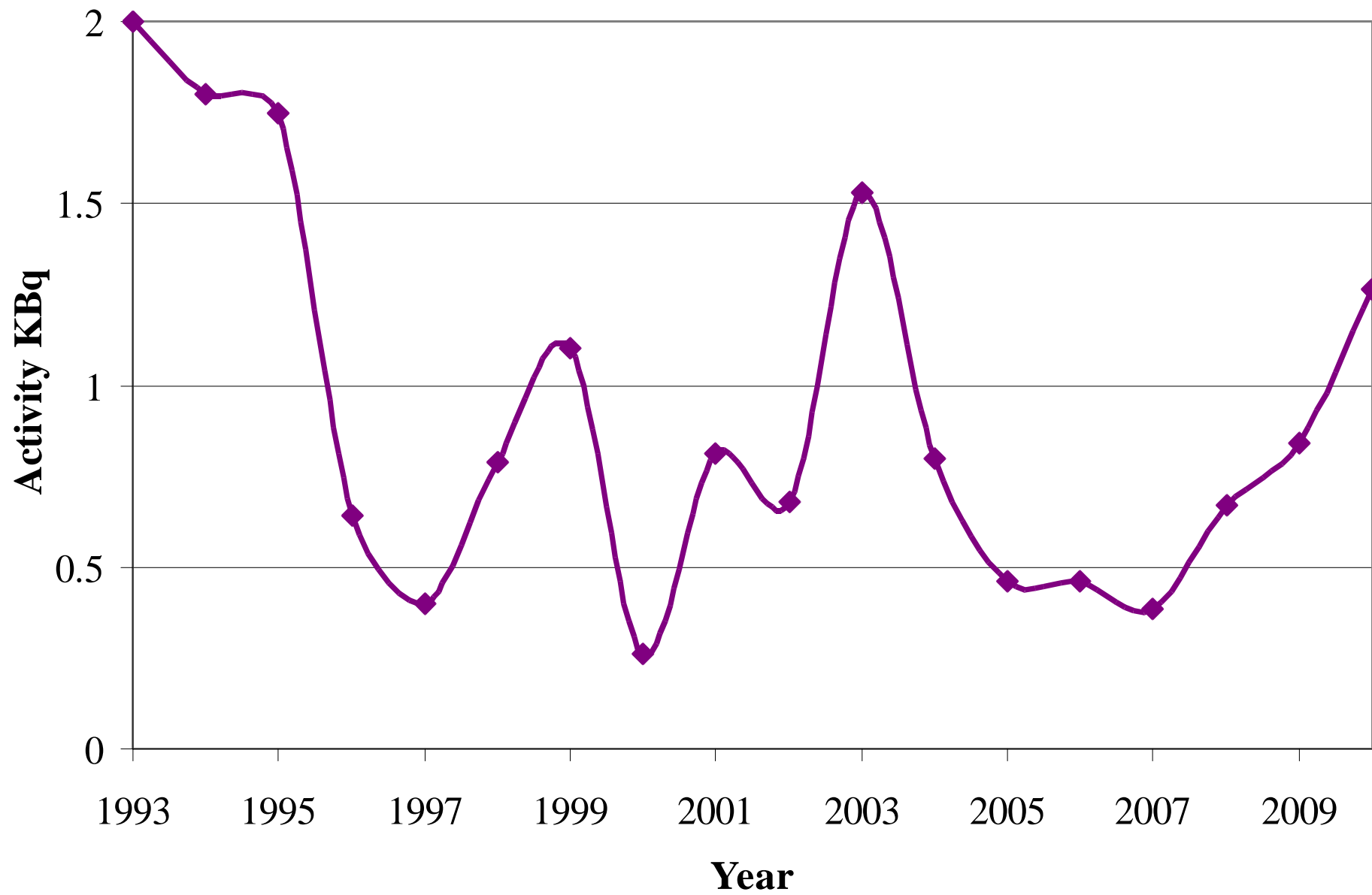
Tritium Discharges to Air (Aldermaston)



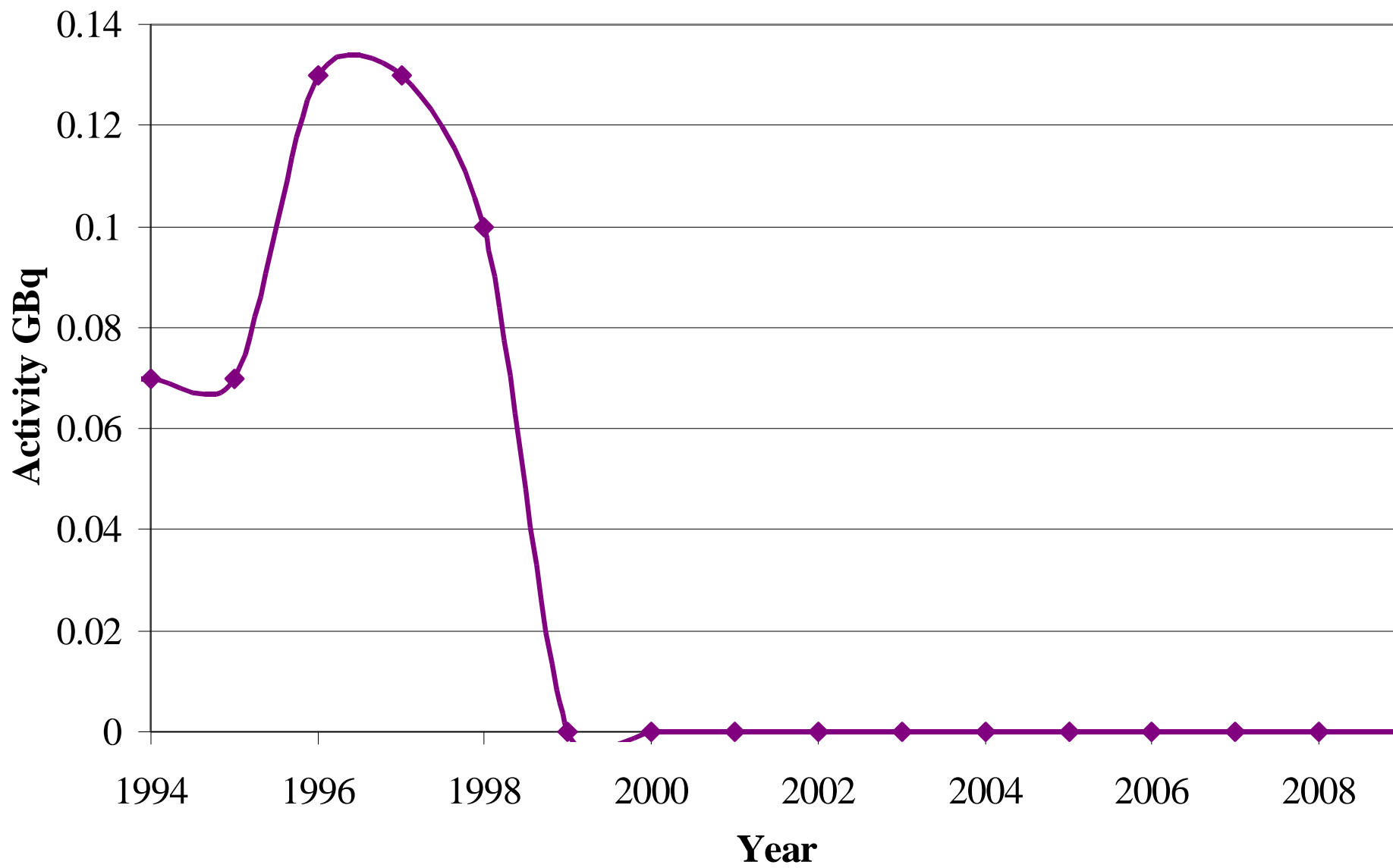
Tritium Discharges to Air (Aldermaston)



Alpha Discharges to Air (Burghfield)



Tritium Discharges to Air (Burghfield)



Checks and balances

- ➔ AWE Environmental Monitoring Programme – imposed through permit by us on the company – various samples – soil, waters, herbage, fruits/vegetables, fish etc
- ➔ EA/FSA Check Monitoring Programmes
- ➔ Audit and Inspections of systems, procedures, assurance, training and standards
- ➔ Radioactivity in Food and the Environment – RIFE Reports

